

The logo for SEAWIND, featuring the word "SEAWIND" in a bold, grey, sans-serif font. Above the letters "A" and "W" are two horizontal blue lines that suggest a stylized wave or a wing.

SEAWIND

A wide-angle photograph of an offshore wind farm. The sea is a deep blue, and the sky is a lighter blue with scattered white clouds. Several wind turbines are visible on the horizon, their white towers and blades silhouetted against the sky. The overall scene is bright and clear.


SEAWIND Projects DT1 and DT2 in Italy


2023


UBICAZIONE PARCHI


LEGENDA

Confini marittimi

 Limiti_acque_interne

 Limiti_12MN

 Limiti_24MN


 Limiti_acque_internazionali

PARCHI OFFSHORE


OPZIONE2 - Del Toro


DelToro_CavoMarino_Opzione2

 MARINO

 TERRESTRE


 DelToro_WindTurbines_Opzione2


 DelToro_AreaParco_Opzione2

 DelToro_Anchors_Opzione2


OPZIONE1 - Del Toro

DelToro_CavoMarino_Opzione1

 MARINO

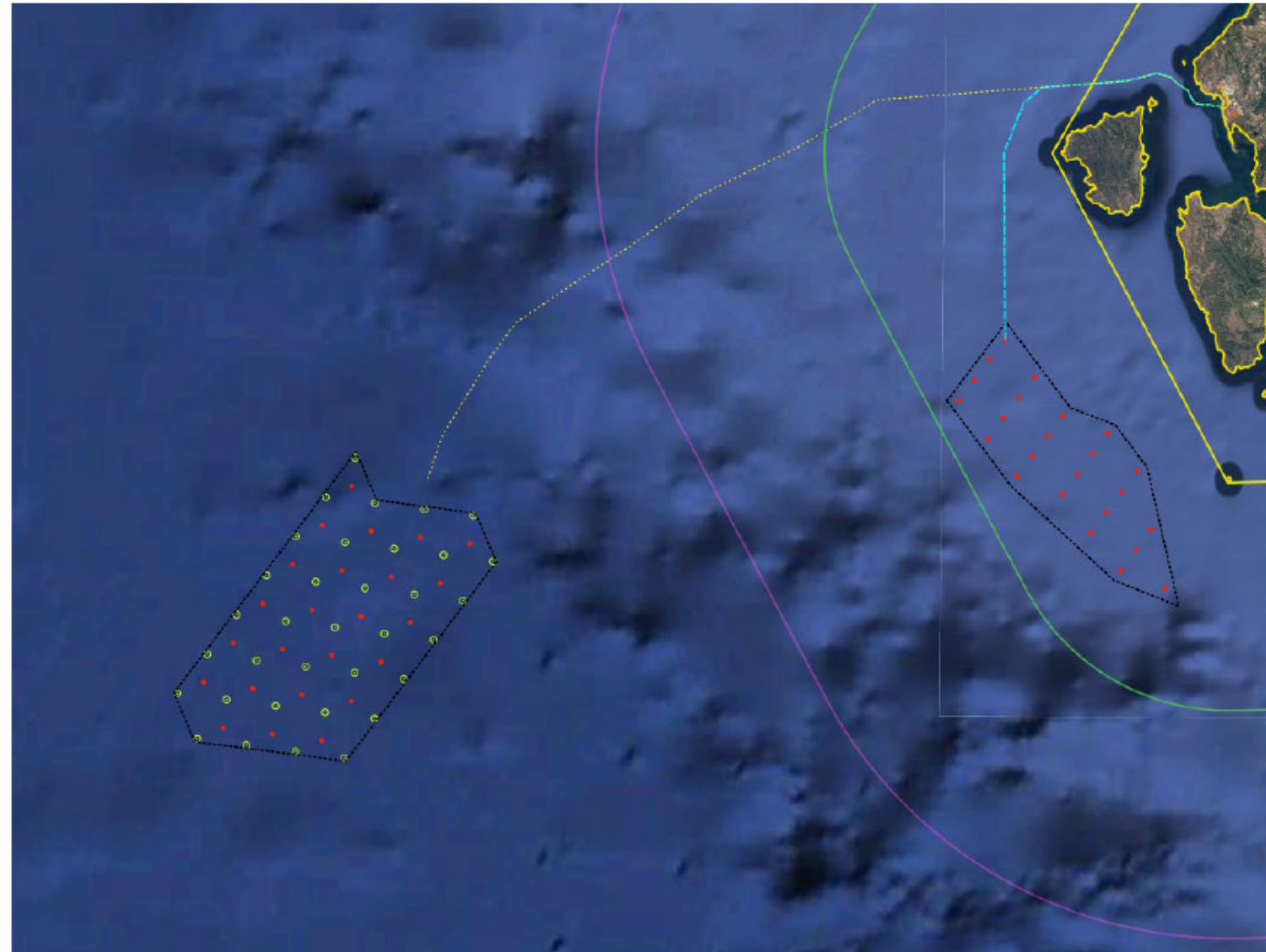
 TERRESTRE

 DelToro_WindTurbines_Opzione1

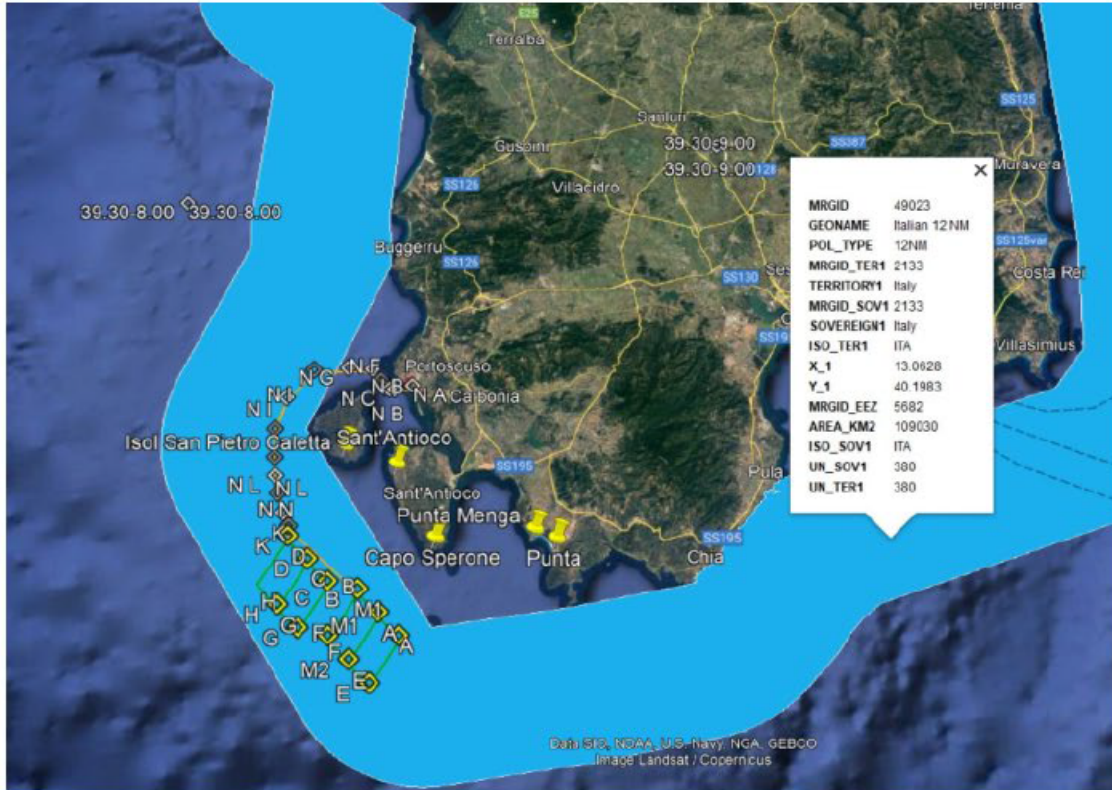
 DelToro_AreaParco_Opzione1

Ciascuna delle 24 unità sarà posizionata in uno specchio d'acqua ad una profondità maggiore di 100 m e minori di 200 al largo della Sardegna sud occidentale per del Toro 1.

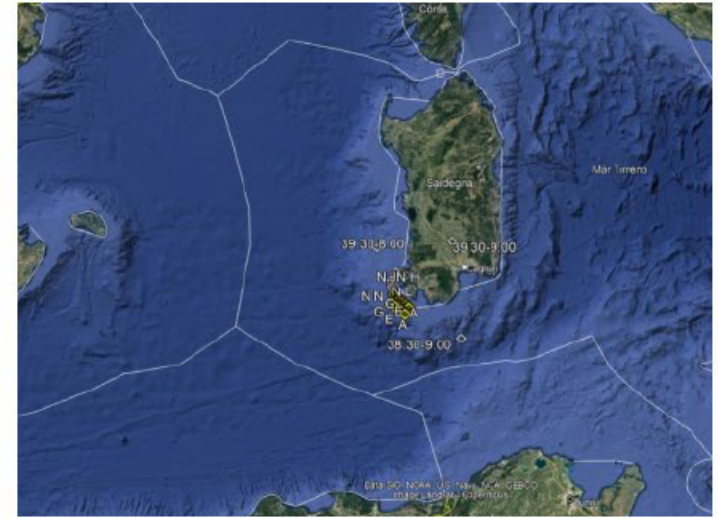
Invece per del Toro 2 arriviamo a oltre 2000m.



OFFSHORE WIND DEL TORO LIMITAZIONE ACQUE TERRITORIALI E ZONA ECONOMICA ESCLUSIVA



LIMITE ACQUE TERRITORIALI 12 NM



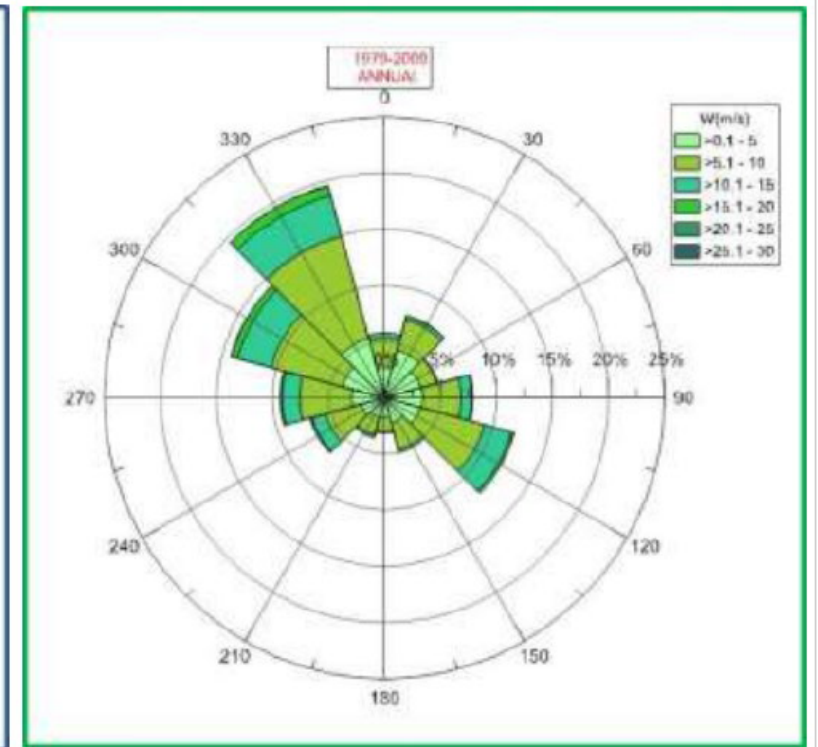
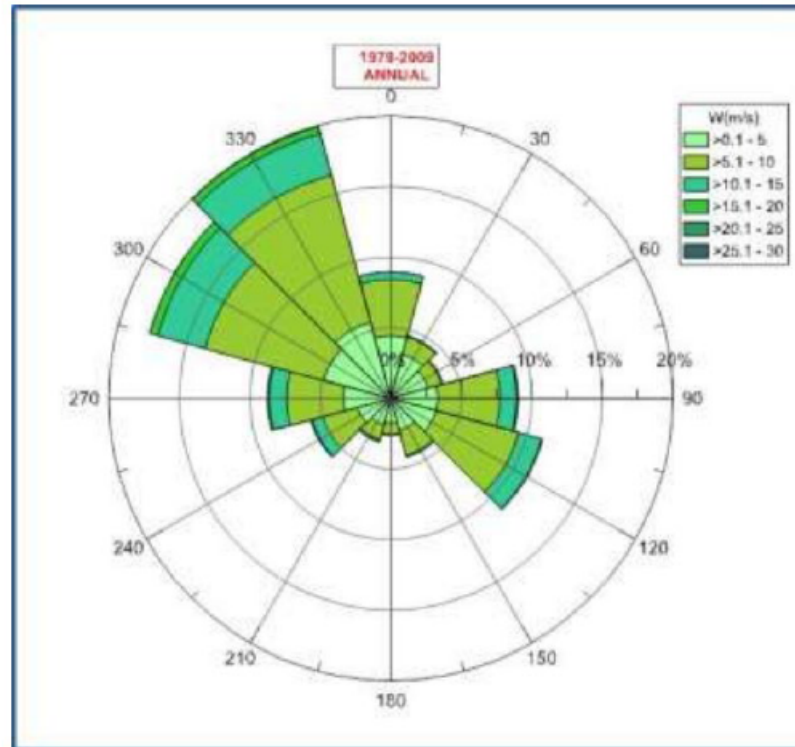
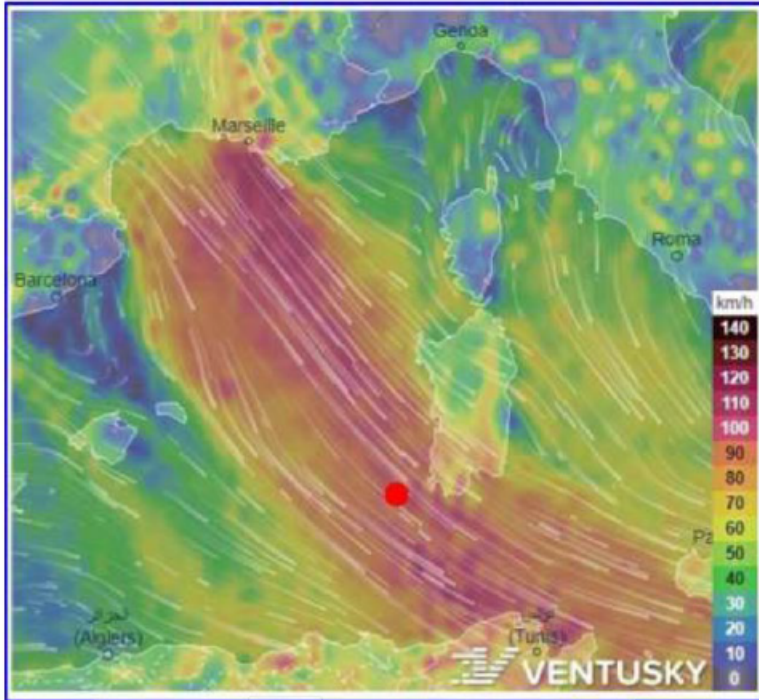
ZONA ECONOMICA ESCLUSIVA

MISURAZIONI ANEMOMETRICHE PER I PARCHI DEL TORO

The available current data in the study area refer to annual and seasonal statistics, i.e. distributions of current velocity vs. direction, derived from 1-year measurements in water depth of about 150m and at 2800 m

DEL Toro 1 - the maximum 1-h speed is 24.9 m/s

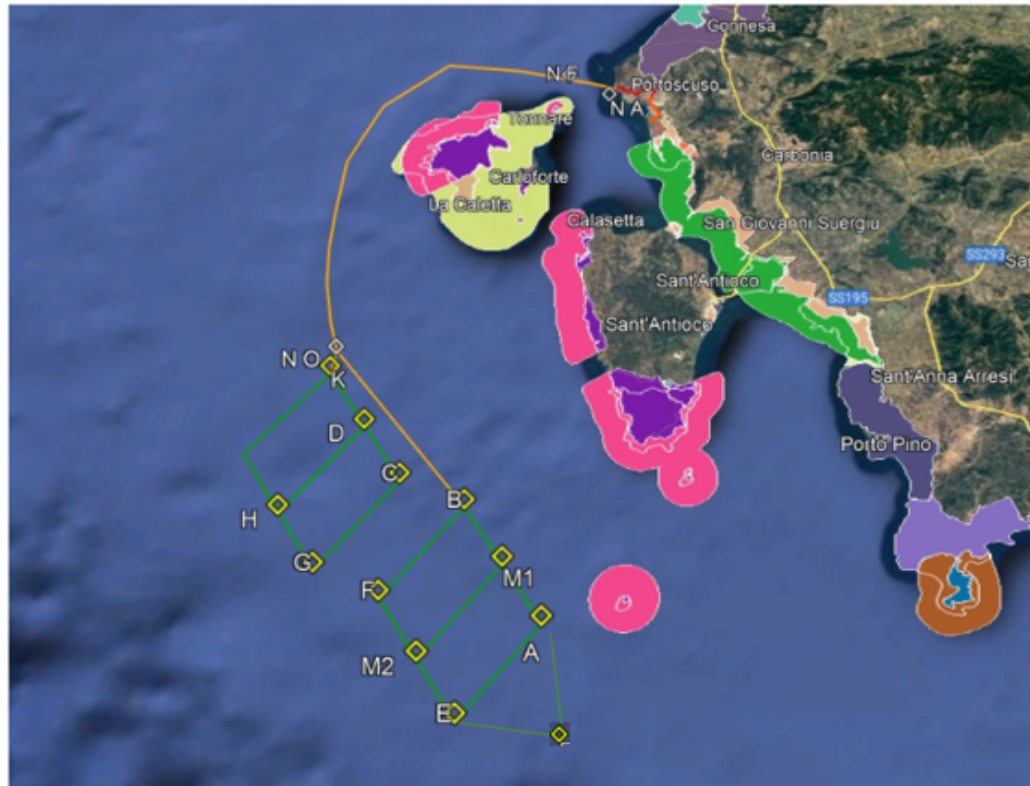
DEL Toro 2 - the maximum 1-h speed is 23.0 m/s



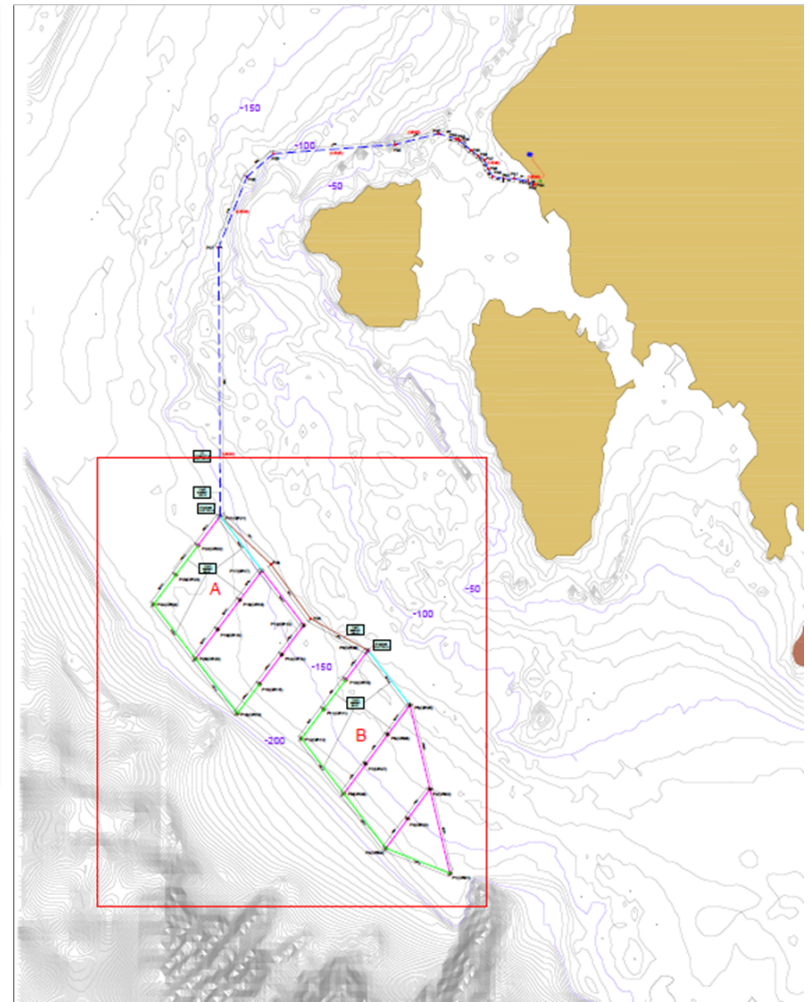
Del Toro 1 Project Overview

PROTECTED AREA ASPECTS

There are several protected areas and zone of interest according to international guideline Natura 2000 which we are going to avoid or minimize the impact.



VINCOLO ZSC (ITB040027 ISOLA SAN PIETRO) –ZPS ISOLA SAN PIETRO ITB043035-
ZPS ISOLA DEL TORO ITB040026)-VINCOLO ZPS SANT'ANTIOCO ITB043032



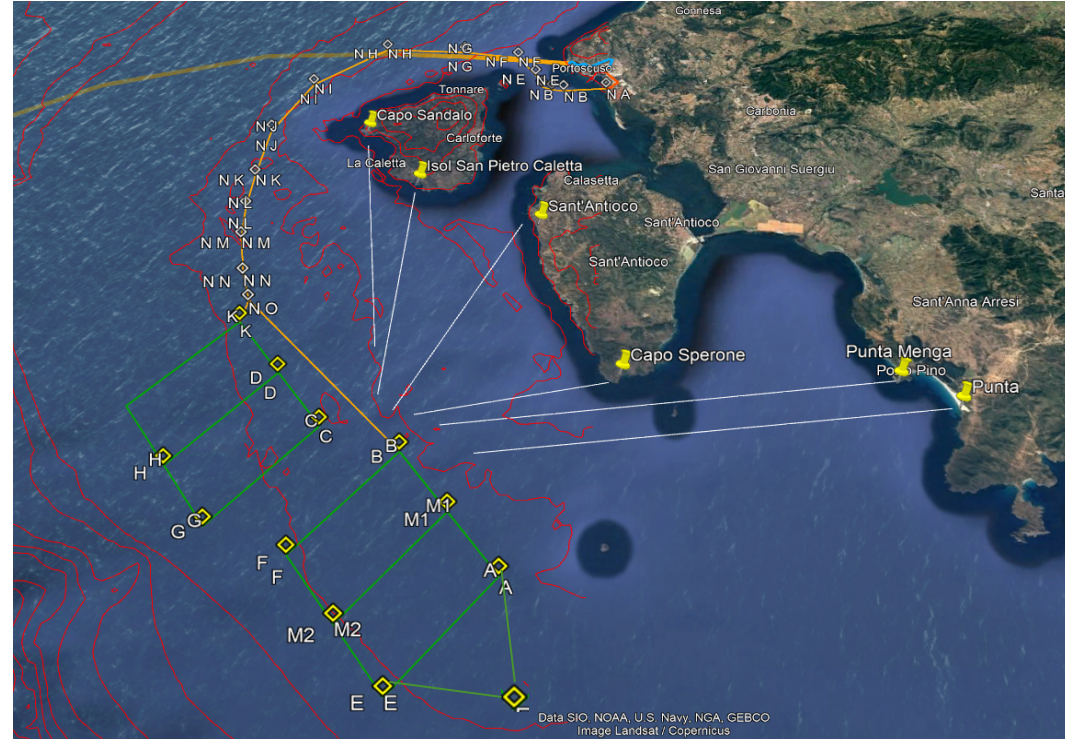
Del Toro 1 Overview

LOCAL SENSITIVITY

Virtualization study done to assess the visual impact prior to engage with more sensitive local communities

IT1201

Turbine System: Seawind 12.2 MW
Production: Electricity by 24 units
Location: SW Sardinia – Italy
Max water depth: about 200 m
Status: Permitting stage. Units' assembly expected to start Q4 2025
Annual Energy Output: 293 MW
Expected period in operation: 50 years

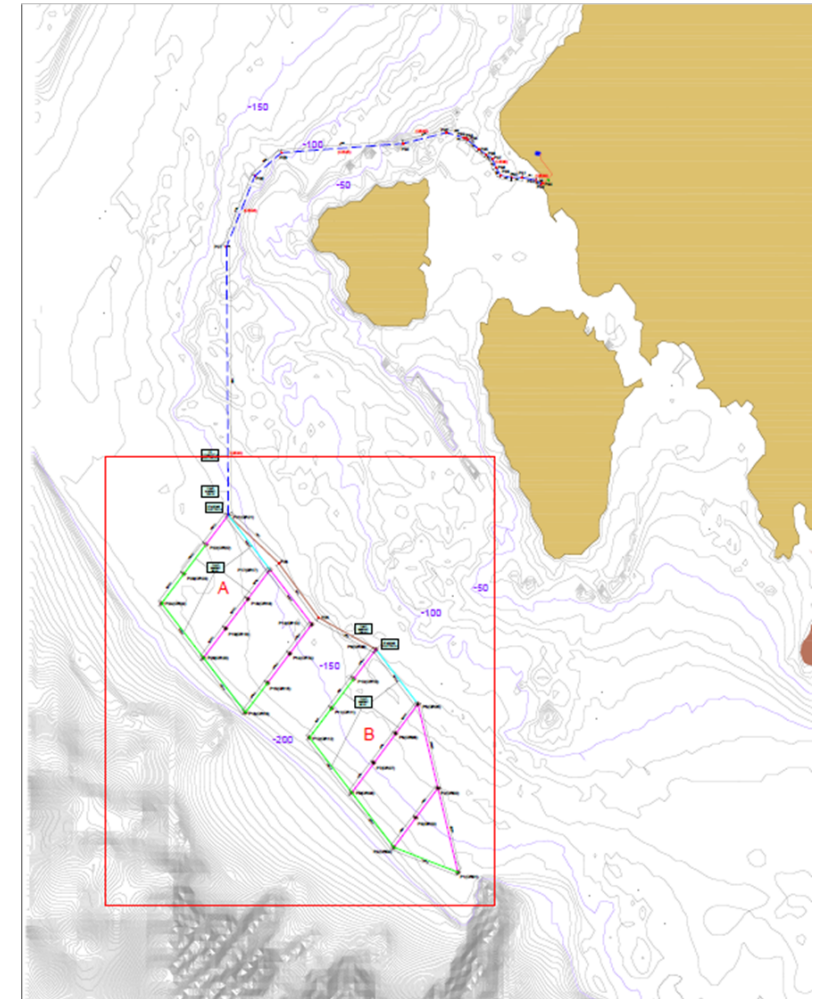
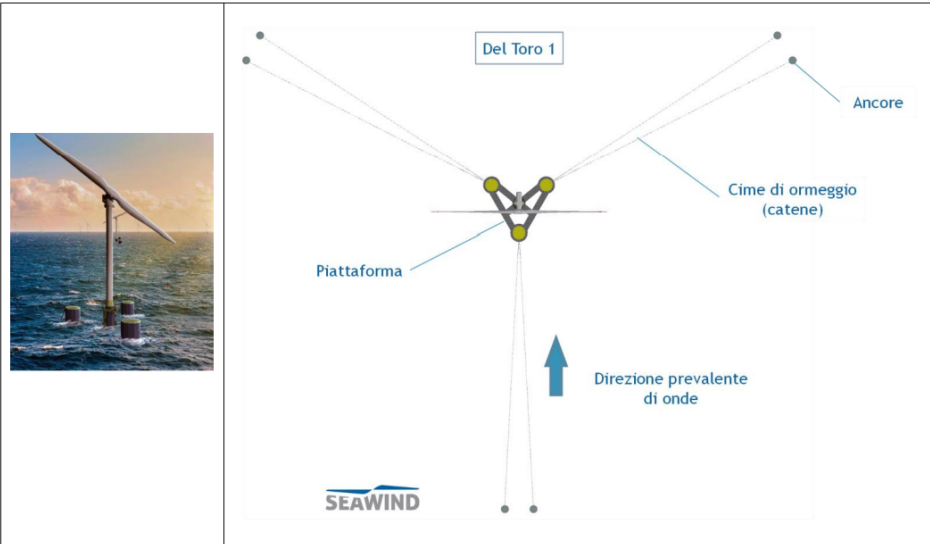
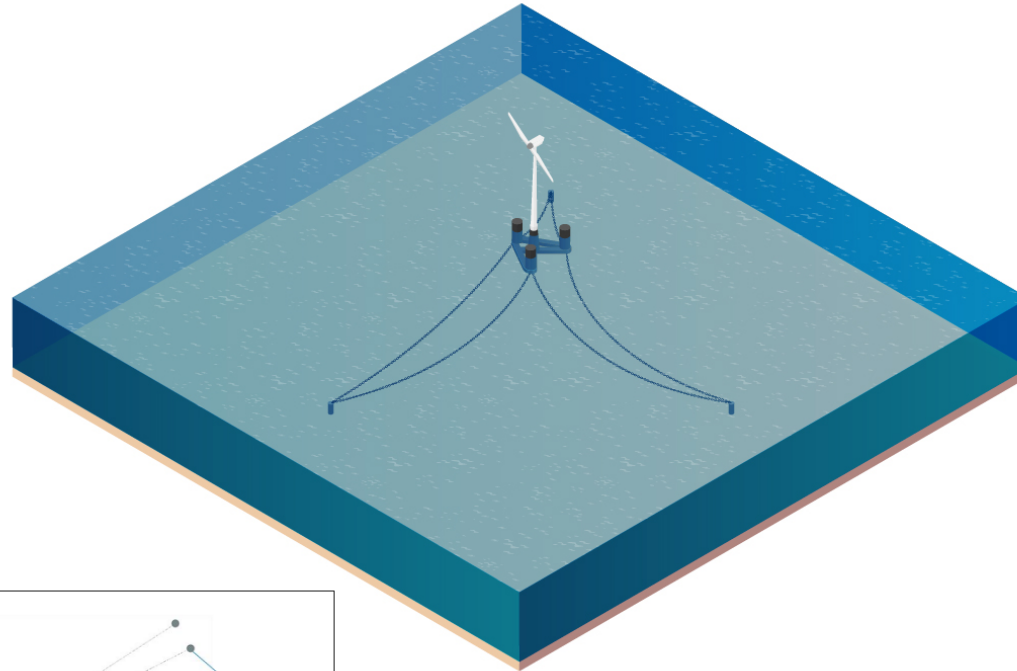


	Points of interest						
	Punta Menga - Porto Pino	Punta vicino Porto Pino	Capo Sperone Sant'Antioco	Sant'Antioco o zona Tonnara	Isola san Pietro zona Caletta	Isola san Pietro Capo Sandalo	Isola del Toro (uninhabited)
DEL-06	37.41	40.64	22.54	19.68	16.24	18.89	25.75
DEL-10	34.43	37.51	19.56	19.46	18.06	21.84	21.43
DEL-18	27.87	30.58	13.92	19.77	22.10	27.31	12.64
DEL-22	26.22	28.56	13.89	22.51	25.99	31.47	9.00
DEL-23	27.67	29.41	17.82	27.95	31.84	37.35	9.04
Minimum distance (KM)	26.22	28.56	13.89	19.46	16.24	18.89	9.00

Del Toro 1 Project Overview

Floating Unit mooring area

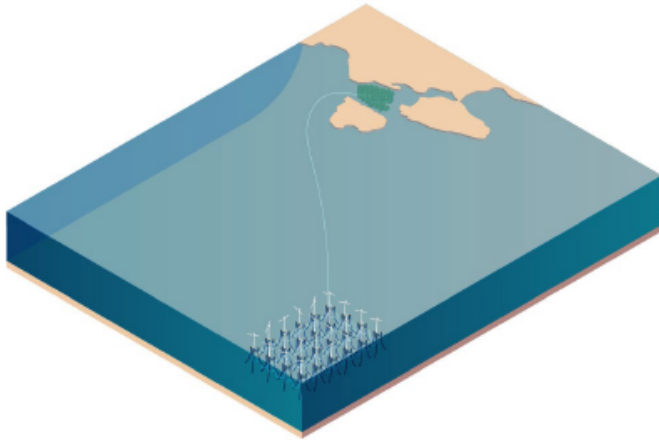
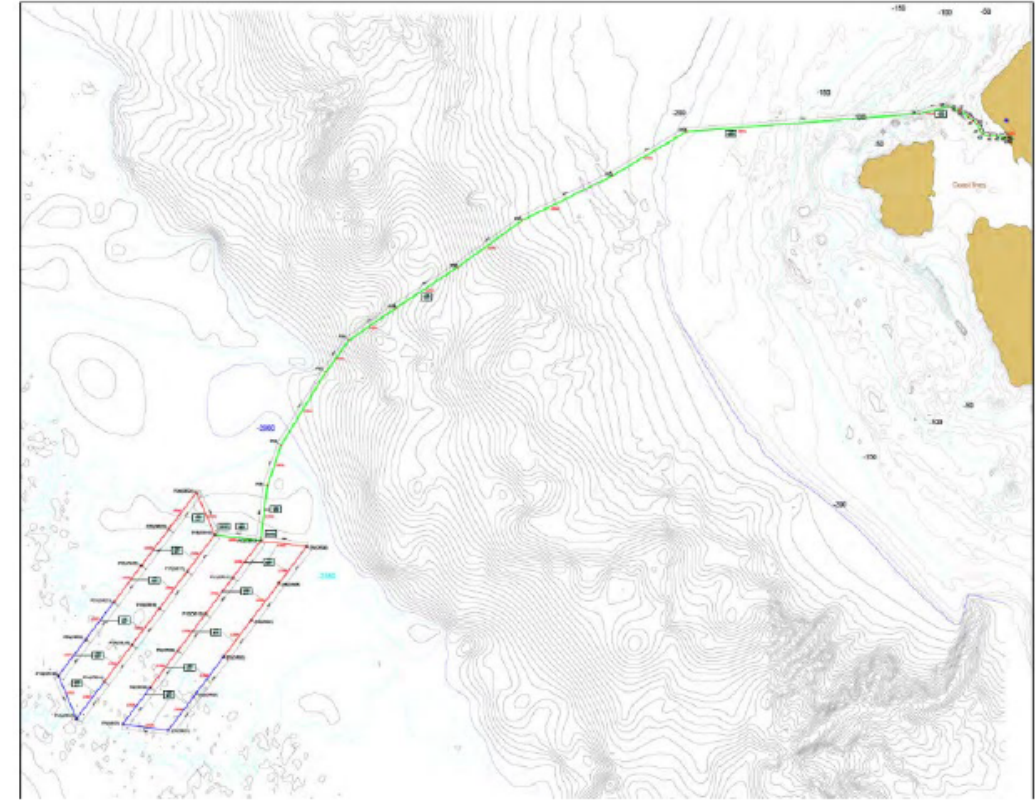
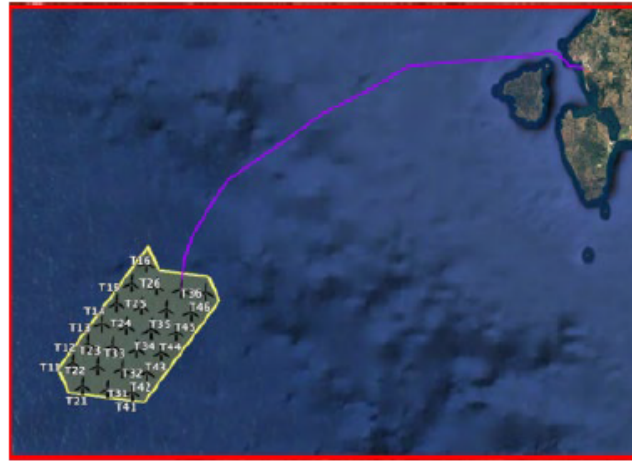
Radius of interest/ Area of Influence (AoI) for marine survey around each floating unit location is about 500m



Del Toro 2 Project Overview

IT1201

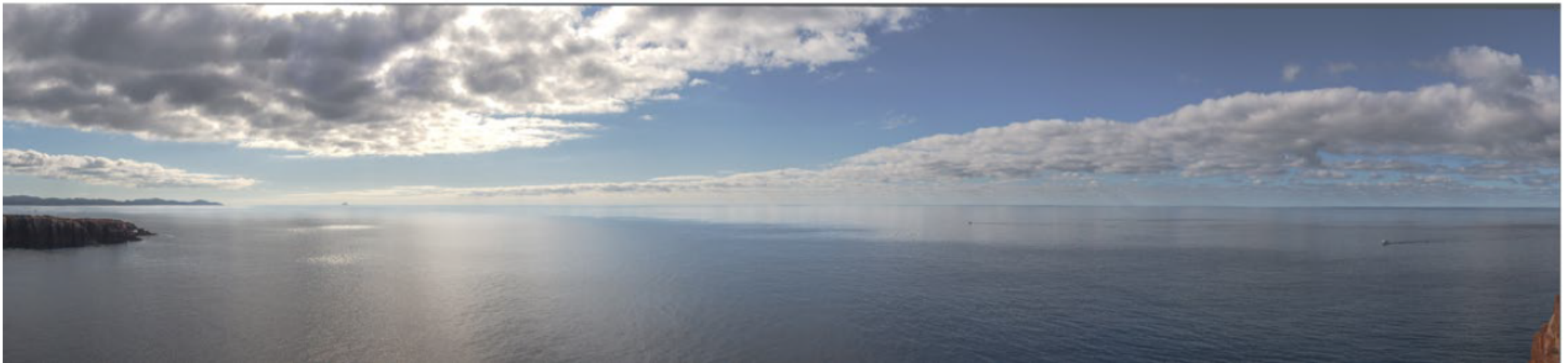
Turbine System: Seawind 12.2 MW
Production: Electricity by 24 units
Location: SW Sardinia – Italy
Max water depth: max about 2800 m
Status: Permitting stage
Annual Energy Output: 293 MW



								Points of interest						
								Punta Menga - Porto Pino	Punta vicino Porto Pino	Capo Sperone Sant'Antioco	Sant'Antioco zona Tonnara	Isola san Pietro zona Caletta	Isola san Pietro Capo Sandalo	Isola del Toro (uninhabited)
Minimum distance								91.01	93.72	76.53	75.44	70.15	69.46	74.29

- 1. Del Toro 1 Project has successfully produced a preliminary environmental study (scoping report) reviewed by the technical committee of MITE – PNIEC-PNRR- with positive feedback and prescriptions on how to proceed to full EIA (environmental impact assessment) in Italian ‘VIA’.**
- 2. Devex for the EIA, the survey activities and the engineering optimization has been already developed**
- 3. Sea concession process has reached the so called ‘Conferenza dei Servizi’ meeting whose scope has been to listen out the opinions of local authorities and NGOs and prepare for the follow up of overall integrated permitting framework called ‘Autorizzazione Unica’**
- 4. Del Toro 2: scoping discussed with Mite and maritime concession requested**
- 5. Grid Operator Terna confirmed both Del Toro 1 and Del Toro 2 STMG**

Virtual view from Cala Mezzaluna



Virtual view from Capo Sandalo



We are re-defining the offshore wind industry.